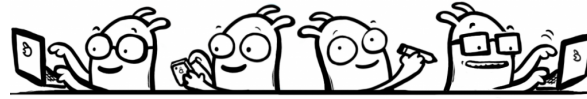




WE'RE HIRING!



Transportation

Full-time day shift
Monday—Friday
8:30am—4:30pm

Dining Services

PT day shifts available—24 hours/wk
6am – 2pm Monday, Thursday
Every other weekend

Maintenance Tech

Part-Time (20 hours per week)
Monday-Friday—8:00am-12:00noon

CAREGIVING OPPORTUNITIES

Ask about our hiring bonus!

- RN/LPN –Full-Time - PM Shift
- RN/LPN –Part-Time - All Shifts

- CNA - *Hiring Bonus

Wages start at \$17.50 + shift differentials & Incentives.

Full -Time - All Shifts
Part-time - All Shifts

- Resident Assistants *Hiring Bonus

Wages start at \$14.00 + shift differentials & Incentives

Full & Part time - All Shifts



Hiring Bonus* - Need extra \$\$\$? Are you a CNA or RA? Fairhaven Needs Your Help!

You can earn an extra \$2,000 as a Full-Time Employee after 1 year (\$1,000 for Part-time)

For additional information & restrictions regarding the bonuses, contact the Business Office.

***The bonus money, by law, must be paid through payroll and is subject to applicable taxes. If eligibility and/or availability is disputed, Administration reserves the right to final decision.**

FREE Health Insurance for 2023

**Fairhaven offers all of our full-time employees
a single health plan for Dean Care Health Insurance
AT NO COST TO YOU!**

10/27/22



If you are interested in one of these positions or know of someone who might be we invite you to visit our website at www.fairhaven.org. You may also pick up an application at Fairhaven.

Questions, contact **Dawn Rocha** at 262-473-2140, ext. 1148.

Fairhaven Senior Services, 435 W. Starin Road, Whitewater, WI 53190