



April Resident Newsletter

April 1, 2025

Devotions with Chaplain Luke Bocher

Tuesdays: Devotions with Chaplain Luke
Olm Fellowship Hall - 10:00am

Wednesdays: Worship with Chaplain Luke
11:00am - Fellowship Hall

Welcome to Fairhaven...

Carol Hurley
Gene & Jean Brown
Kathy Schwab
Jami Merz
Shirley Graves



In Memory of

Marjorie Black
Richard Enstad
Jim Leaver



Happy April Birthday!!!

Dorothy Otting	3
Mary Ellen Deloach	7
Peter Frenelius	8
Amber Price	8
John Cobb	11
Gladys Ellerman	11
Judith Moldenhauer	12
Marion Malo	14
Caroline Wieman	14
Russell Wickler	15
Janet Rothman	22
Shirley Grant	23
Kathy Schwab	24
Georgia Zalar	25
Beverly Aulik	27
Thomas Ryan	27
Janet Craft	28
Billie Jo Norman	30



Shining Stars!



• Jerry Hall (Maintenance)

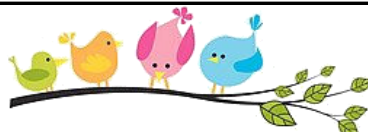
“Jerry on the spot” folks are constantly stopping Jerry to “fix it”. He is always patient and sends them to the desk to request a work order be put in or he will call to have one put in while he goes with the resident to “see what’s wrong”. He even fulfilled one resident’s request for “the Rolls Royce of remote controls”. Keep up the good work!! —signed Tena Engels

• Raul Castro and Dave Maurer (Transportation)

Our drivers always shine! Coming in early to “warm up the car for the ladies”. Running to Walmart SEVERAL times a day. Always at the ready with an arm for assistance. Never bawking when we make a change midstream to get someone to an appointment ASAP. And knowing when I need a Persian. —signed Tena Engels

Gardens and Planting - Spring is coming... If you’re interested in reserving a garden space this year, please notify the Front Desk. Those who had spaces last year and request them this year will be given first choice of their previous space.

Reminder: If you do sign up for a space, it **must be maintained** weekly or you must have someone taking care of it for you; otherwise, Maintenance will be tilling that space under in consideration of your fellow gardeners.



Happenings at Fairhaven

Tuesday, April 1st at 10:45 am in Olm Fellowship Hall—Chair Tai Chi with Jennifer

Tuesday, April 1st at 12:45 in Olm Fellowship Hall—Memorial Service for Jim Richards (this will be done in time for Current Events)

Tuesday, April 1st at 6:00 pm in Olm Fellowship Hall—Bingo w/ UW-W student group Pre-Health

Wednesday, April 2nd at 10:00 am in Olm Fellowship Hall—Catholic Mass with St. Patrick's Catholic Church

Wednesday, April 2nd at 10:00 am in the Piano Lounge—Pet Therapy with Cheryl and Aoife

Wednesday, April 2nd at 1:15 pm in Olm Fellowship Hall—"American Ocelot" 55 minute Nature DVD on the sad history, precarious present, and optimistic future for one of the United States' most endangered wild cats.

Thursday, April 3rd—Lunch outing to Culver's. Transportation will leave the front lobby at 10:50 am and if interested in going, please sign up at the front desk by Wednesday, April 2nd.

Thursday, April 3rd at 6:00 pm in Skylight Dining Room—Ice cream social w/ Lambda Chi fraternity

Friday, April 4th at 1:15 pm in Olm Fellowship Hall—Drum circle with Christine Hayes and UW-W students (no bingo)



Monday, April 7th at 12:45 pm in Olm Fellowship Hall—Bakers Dozen +/- group

Monday, April 7th at 3:00 pm in Olm Fellowship Hall—Fairhaven Lecture Series

Monday, April 7th at 6:00 pm in Olm Fellowship Hall—Bingo w/ Delta Chi fraternity

Tuesday, April 8th at 10:45 am in Olm Fellowship Hall—Chair exercise with Janet (No yoga today)

Tuesday, April 8th at 6:00 pm in Olm Fellowship Hall—Bingo w/ UW-W student group AMA

Wednesday, April 9th—Sue Weigel and UW-W Children's Center Art Exhibit Outing- Sue and her friends at the Children Center recently did an art project and it will be on display at the University Center and we will be going in support of Sue to see her artwork and that of her little friends! Transportation will leave the front lobby by 9:45am and we will be there about 15 minutes. If interested in going and showing support of Sue, please sign up at the front desk by Tuesday, April 8th.

Wednesday, April 9th at 10:00 am in the Piano Lounge—Pet therapy with Cheryl and Aoife

Wednesday, April 9th at 1:15 pm in Olm Fellowship Hall—"Butterfly Blueprints" 55 minute Nova DVD. Beneath butterflies colorful charm is a wealth of hidden scientific secrets that show them to be smarter and more resilient than we ever imagined.

More Happenings at Fairhaven...

Thursday, April 10th from 10:00-11:00 am in the Piano Lounge—Free blood pressure screenings with staff from Fort Wellness.

Thursday, April 10th at 1:15 pm in Olm Fellowship Hall—Music with Julie Anne Thompson

Thursday, April 10th at 2:30 pm in Skylight Dining Room—Spinach pinwheel social



Thursday, April 10th at 5:30 pm in the Piano Lounge—Pet therapy with Janesville/Beloit Kennel Club

Thursday, April 10th at 6:15 pm in the Piano Lounge—UW-W class visit—Social and Cultural Background class

Friday, April 11th at 10:00 am in the Piano Lounge—Social visits and table games with UW-W student group CRU-Christian organization

Friday, April 11th at 1:30 pm in Olm Fellowship Hall—Easter craft event w/ Alpha Sigma sorority

Monday, April 14th at 1:15 pm in Olm Fellowship Hall—Wisconsin Historical Society Presentation: Cemeteries of Walworth County

Monday, April 14th at 3:00 pm in Olm Fellowship Hall—Fairhaven Lecture Series (Last on for the Spring)

Tuesday, April 15th at 10:00 am in the B Lounge—Catholic Communion with St. Patrick's Catholic Church

Tuesday, April 15th at 10:45 am in Olm Fellowship Hall—Chair Tai-Chi with Jennifer

Tuesday, April 15th at 1:00 pm in the D Lounge—UMC Communion

Tuesday, April 15th at 6:00 pm in Olm Fellowship Hall—Bingo w/ UW-W student group Pre-Health

Wednesday, April 16th at 10:00 am in the Piano Lounge—Pet Therapy with Sherrie & Suzi

Thursday, April 17th—Red Line BBQ Truck will be here outside the Main Entrance. Flyers will go out at the beginning of April

Thursday, April 17th at 9:30 am in Olm Fellowship Hall—Resident Council. All are welcome to attend.

Thursday, April 17th at 10:15 am in Olm Fellowship Hall—Canvas paint art project led by Leisure Services/Therapy intern Erin

Thursday, April 17th at 1:15pm in Olm Fellowship Hall—Bingo w/ Angeline Doman- Director of Case Management and Operations at Bethel House in Whitewater

Even More Happenings...

Thursday, April 17th at 3:00 pm in Olm Fellowship Hall—UW-W Piano Recital w/ students of Dr. Karen Boe

Thursday, April 17th at 6:00 pm in the Skylight Dining Room—Ice cream social w/ staff from Generac here in Whitewater

Friday, April 18th at 1:15 pm in Olm Fellowship Hall—Bingo w/ UW-W student group Phi Eta Sigma

Saturday, April 19th from 10:00-12:00 in the Front Lobby—Whitewater Fiber Arts Group



Saturday, April 19th at 4:00 pm in the Piano Lounge—Saturday Social

Monday, April 21st at 10:30am in Olm Fellowship Hall—Listen In with Fairhaven CEO Paul Kuenning

Monday, April 21st at 1:15 pm in Olm Fellowship Hall—Join Luke & Lori Bocher for a presentation on their recent trip. A Roads Scholar program to the Sonoran Desert where they visited parts of the desert in Tucson, Palm Springs and Death Valley.

Tuesday, April 22nd—Softball Game Outing here at UW-W—Transportation will leave the front lobby at 2:20 for the 3:00 game. Please sign up at the front desk if you would like to go.

Tuesday, April 22nd at 6:00 pm in Olm Fellowship Hall—Bingo w/ UW-W student group AMA

Wednesday, April 23rd at 1:00pm in Olm Fellowship Hall—Matinee Movie

Wednesday, April 23rd at 6:00 pm in the Piano Lounge—Popcorn Social

Thursday, April 24th at 10:15 am in Olm Fellowship Hall—First English Lutheran Church Service

Thursday, April 24th at 2:30 pm in the Skylight Dining Room—Raspberry cheesecake pocket social

Thursday, April 24th at 4:30 pm in Olm Fellowship Hall—UW-W Vocal Jazz Ensemble concert

Friday, April 25th from 10:00-11:00am in the Front Lobby/Piano Lounge—Come on down for social visits and table games w/ UW-W Student Athletes.

Friday, April 25th at 1:15 pm in Olm Fellowship Hall—UW-W Make a Difference Day Dog Treat making

Monday, April 28th from 9:45-10:45am in Olm Fellowship Hall—We will be joined by students from Palmyra/Eagle (18 middle and high school students) for a social and art project. Part of their visit will be to donate 20 glass sun catchers that they made as part of an Art Grant they received. We are looking for 20 residents to be part of this exciting visit and ask that you sign up at the front desk.

Still More Happenings...

Monday, April 28th at 1:15 pm in Olm Fellowship Hall—"Ansel Adams" 1 hr. 40 min. American Experience DVD. A visionary photographer, pioneer in technique and environmental crusader. An intimate portrait of a man whose art and life were connected with photography and wilderness.

Monday, April 28th—Lynn Binnie will be driving the bus to Young Auditorium for anyone interested in going to see the University/Community Band. Celebrate the harmony of community and campus talent as the University/Community Band takes the stage. Join us for an inspiring evening filled with the melodic synergy of UW-Whitewater's exceptional student musicians and our dedicated community members. Doors Open: 7:00 PM, show starts at 7:30 PM and ends at 9:00 PM. Tickets are \$4.00 and if interested in going you must sign up by Monday, April 21st. Transportation will leave the front lobby by 6:35 and there will be a Prairie Village Community Center pickup offered with pickup at 6:45

Tuesday, April 29th at 10:45 am in Olm Fellowship Hall—Seated Tai Chi w/ Jennifer

Tuesday, April 29th at 6:30 pm in Olm Fellowship Hall—Bingo w/ UW-W student group Circle K

Wednesday, April 30th at 1:30 pm in Olm Fellowship Hall—Bingo w/ staff from Generac

Wednesday, April 30th at 6:30 pm in Olm Fellowship Hall—United Methodist Choir concert led by Christine Hayes (no movie tonight)

The Monarchs are coming!

Monarch Waystation Program



After wintering in the mountains of Mexico, the winged beauties are returning to the North. In anticipation, our FABULOUS habitat will be ready for occupants mid to late May. While there was an uptick in the Monarch numbers this year, there is still a need to preserve their depleted resources. With this in mind, we have applied to become a "Monarch Waystation". By creating and maintaining a Waystation, we help to assure the continuation of the spectacular Monarch migration. Our goal this year will be to bring in more host plants for the adult butterflies to ensure they have nectar and protection along their migration paths. The Monarch migration is truly one of the world's greatest natural wonders. To learn more about the program stop and see Tena, at the reception desk., your Monarch Midwife.



Do You like Orchids and Plants?

After 9 years of caring for the orchids and plants, Shirley Klindt would like to retire. She is willing to show what she has learned caring for them. You will enjoy the results of your care. The orchids and plants are in the hallway between A and B on the first floor. Please let Shirley know of your interest. The sooner the better. Thank you.

Special Event: An Author in Our Midst!

Sunday, April 6th at 1:15 in Olm Fellowship Hall, we will celebrate the accomplishment of Fairhaven resident Merry "Sunshine" Fitz-Randolph. Merry has self-published a book titled, "Dear Grampa". It is her story, as told in letters to her Grampa, of the "adventures" of moving from the city to the country with 3 small children. The book will be available to purchase for \$10, and Merry Sunshine will be delighted to sign your copy while she shares how this charming book came to be.



New Activities!

Fairhaven Choir- held every Thursday at 9:30am in Olm Fellowship Hall except for the 3rd Thursday of every month

Bean Bag Baseball- Held every Monday at 10:00am in Olm Fellowship Hall except for the 3rd Monday of every month.

EUCHRE- will be held in the Piano Lounge:
Tuesday's at 1:00
Saturday's at 2:45

Area Bank services at Fairhaven...

First Citizens State Bank will be in the Private Dining Room Thursdays from 11:00-11:45

Premier Bank: By appointment only, on the 2nd & 4th Tue. 10:00-11:00. Call 262-473-1111 to schedule.

Current Events & Ideas

With old age we dare not close our minds to what is going on in the world around us! Our vast array of interesting discussions range from politics to religion, from economics to health concerns, and from history to artificial intelligence.

**Each Tuesday afternoon
2:00-3:00pm
in Olm Fellowship Hall.**

Looking for something to do?



The Fairhaven bell choir is looking for a few good people to join their group. Rehearsals are Friday mornings at 9:30 and you do not need to read music. We will train you! If you love music and would like to participate please call Tom Ryan at 608-201-2004 or stop at the front desk and let Tena know.

Resident Tornado Watch and Warning Information

When a Tornado Watch is issued the following steps should be taken:

Residents should review the Tornado Instructions that are posted on the inside of your apartment door.

Residents that have a cell phone, should make sure it is fully charged and have it close to you.

Everyone should locate a flashlight or lantern, make sure it is working, and place where it is easily accessible.

Turn on your radio or tv to monitor the weather.

A Tornado Warning is issued when a tornado has been sighted or has been indicated by weather radar. In the event of an actual Tornado warning, it is recommended that you act immediately.

If you are in your apartment at the time of the warning, take your flashlight and cell phone and go inside your bathroom and close the door.

If you are in the front lobby, piano lounge, private dining room or skylight dining room it is recommended that you go to Fellowship Hall.

If you are in the lower level, we recommend that you go to the inside hallway of LLC building or the inside hallway by Physical Therapy.

We want all residents to get to a safe area as quickly as possible and to avoid going past windows in the hallways and breezeways.



As Spring approaches not only do we want to prepare for severe weather, but many people also find themselves getting the urge to spring clean; **One important thing to do at least annually is to get rid of Unwanted or outdated Medicines:**

The National Safety Council recommends you take unwanted or expired medicines to a prescription drop box or take-back event near you. If you have medication that needs to be destroyed, please take it to one of the wellness nurses for proper disposal. Otherwise, if you want to do so yourself, be sure to destroy the unwanted medicine in a drug buster container containing charcoal.

April Resident Council Update

New Council Member

Fairhaven's Resident Council welcomed another new member to the council, David Helming. David lives on the first floor in D building. He is a good listener, and will treat anything you say like it is his own question or idea. Welcome Dave!

Food Services News

Jasmine brought news that they made it through the start of the New Year, including Valentines Day and St. Patrick's Day, at the same time moving forward with service on the newly opened 3rd and 4th floors in C building. She also reminded us to be alert so Spring colds and flu. Although we do not appear to be at a crisis, remember to wash your hands often during the day; the best way to protect yourself and others.

Marketing Report

Paul and Brian discussed third and fourth floors, with residents excited to be in their new rooms. Tours continue, especially for 2nd and 3rd floors, and apartments. Brian also reminded us that the Brewers Game is filling quickly with excitement growing daily. He talked a little about the Fresh Fishing Fun outing coming up soon for all the die hard fishing fans, and those who just want to have fun. Here's hoping Mother Nature is happy that day, and doesn't cry alligator tears like she has in the past.

Prairie Village Moment

Jim Schumacher spoke about the many woodworking projects he has completed around Fairhaven and Prairie Village, including benches, chairs, planters, and Little Free Library enclosures. A craftsman in his own right, he also brought photos of pieces he has done for himself and friends. He told us he had been working with wood since he was 17. The photos of his completed pieces, shelving, cupboards, wardrobes, benches, and more attest to his learned skills.

Employee Christmas Fund

Neil Aiken reported that the annual Employee Christmas Fund presently has north of \$24,820 between our two accounts. PLEASE remember the Employee Christmas Fund accepts donations all year long and is a wonderful way to say thank you to all of the staff here who work to make Fairhaven and Prairie Village the special places they are.

You are Invited

Resident Council meetings are held the third Thursday of the month (except August) at 9:30 am in Olm Fellowship Hall. **Our next meeting is scheduled for April 17.** All Fairhaven and Prairie Village residents are encouraged to attend. The Council is an opportunity and good method to learn more about our community and provide information to Fairhaven leadership, including Department Heads. We can also help you find the best person/persons to receive your ideas and concerns. We are here as your representatives and would like to see you and hear your thoughts. Please consider attending this next, or any future, meetings.

From Dining Services

Reminder if you are still holding onto your Christmas Gift Certificate, though these do not expire, we encourage you to use them before they are misplaced. We are excited to see you in Dining Services.

Mark Your Calendars!

Sunday, May 4th at 10:00 am Rev. Jens Notstad will be here to conduct a Sunday morning worship service for all to join. Come on down and meet Rev. Notstad and enjoy a traditional service.

Friends/Mini Mart Update



We will appreciate your shopping for your Easter cards and other decorative items in the Mini Mart. Spring has sprung!

The Mini Mart, located on Fairhaven's Lower Level, is open **Monday and Wednesday afternoons 12:30-3:00**. It is open for all residents, employees, and guests. A long-time project of the Friends of Fairhaven, it is an all-volunteer effort. We appreciate your support since your purchases fund our donations that benefit all residents.

Severe Weather Preparedness/Tornado Awareness Week: April 7 - 11.



This annual campaign encourages everyone in the state of Wisconsin to prepare for the tornadoes and severe storms the state frequently experiences during the spring and summer months. The state of Wisconsin experienced 45 tornados in 2024.

The statewide City and facility Tornado Drill will take place on Thursday April 10. A MOCK tornado watch will be announced at 1pm, with a MOCK tornado warning being announced at 1:45.

Please mark your calendar and plan to participate in the facility wide drill, as this is an opportunity to test our procedures for a tornado, our response time, and communication methods as if it were a real situation. Prior to the drill announcement please review the Tornado Instructions posted on the inside of your apartment door.

If there is a threat of severe weather in Wisconsin on April 10, the statewide drills will be postponed until Friday, April 11. The drill will go on in all other conditions, including non-severe weather (clouds, rain, dark sky, scattered thunderstorms, etc.). If severe weather is also expected on Friday, the drill will be cancelled.

Fairhaven Lecture Series - Spring 2025 Mondays, 3:00 p.m. in Fellowship Hall

Remarkable Women

What can we learn about the leadership of women in business, art, activism, and sport and how their accomplishments have shaped who we are today? The stories of these women across the world intrigue us, inspire us, and they remind us how their creativity and perseverance continue to impact our lives. Join us this spring as we examine a series of remarkable women across the globe and throughout history.

April 7	Revolution, Rights, and Women's Activism: Olympe de Gouge —Kimberly Nath, Associate Professor and Chair, History
----------------	---

April 14	Landscape of College Athletics and Women in Sport —Keri Carollo, Head Coach, Warhawk Women's Basketball
-----------------	--

We want to remind all that the Fairhaven Bus will be running like normal with a pickup at 803 Burr Oak and 875 Acorn Ridge at 2:35. Please sign up for these rides and return ride will happen immediately following the lecture.

All lectures are free and open to the public and are held on Mondays at 3 p.m. in the Olm Fellowship Hall of [Fairhaven Senior Services, 435 West Starin Road, Whitewater](#). Street parking is adjacent to the building. Masks may be required in common areas at Fairhaven Senior Services. Please be prepared on arrival. Unable to attend? Links to videos of lectures, can be found at <http://www.uww.edu/ce/fairhaven>.



From Chaplain Luke

On Friday, April 18 at 10:45 in Fellowship Hall you are welcome to join in worship as we remember the crucifixion of Jesus Christ and his great sacrifice for all people. We will use the format of the seven last words from the cross. The service will be meditative and include hymns and scripture readings as we remember his last hours.

Holy Week, the most important week in the Christian year is just a few weeks away. It is a week of extremes, beginning on Palm Sunday with shouts of joy and expectation as people believe God's kingdom is about to arrive. But in a few days the mood changes dramatically as the hopes of many are dashed: On Thursday Jesus speaks not about his victory but about his body being broken and his blood poured. That same night he is arrested, then tried and mocked, his disciples flee, his chief disciple denies him. Then he is beaten bloody and led to the place where he experiences a slow, torturous death on the cross. Even his closest followers are so overcome with grief and fear that they hide in a room with locked doors. It looks like total defeat. But then... Sunday! Jesus is risen!

Sometimes we are living in times when our hopes are dashed and the future looks bleak. It may be that someone we love comes down with a terrible illness or dies. It may be that our own health deteriorates, and we lose some of our abilities. It may be that things do not go as we had hopes for family members or for our nation. And we despair.

It is in the midst of our suffering and in the depth of our despair, we need to remember that Christ is risen and that the future belongs to God. We need to remember that although our lives have their share of sorrow, disappointment and heartbreak, God has a new future ahead for all of us. I hope this season of Lent that your faith will be strengthened and that during Holy Week you will draw near to the God who accompanies us during trials and brings us to new life. Remember, Christ IS risen and in God's time God's Kingdom WILL come. Thanks be to God!

A Fond but Difficult Farewell

I would like to thank each and every resident for all the stories, life lessons, compassion, and love you have all shared with me. I have been so blessed and lucky to have grown and to have traveled this Fairhaven journey together. It has been a pleasure to get to know you and an honor to help care for you. I have learned so many things from all your life wisdom. My last day will be April 14th as I plan to slow things down a little in life. I hope to see you all before then...I love hugs! Thank you all for tickling my heart for over 25 years.



Sincerely,
Margie Giese, Friend/LPN

Please Help Us Welcome...

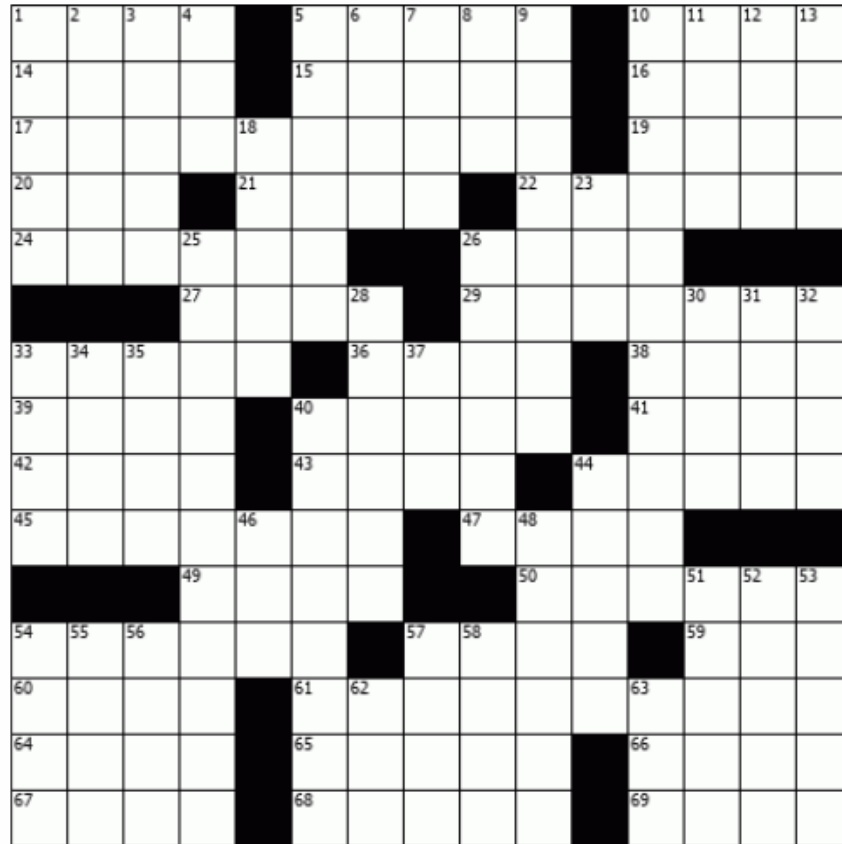
Ms. Nicole Gosh, LPN will join us as the new nursing department manager. Nicole was a former Fairhaven employee for over 13 years in skilled nursing. She has agreed to come back to Fairhaven and team up with Jessica. Together they will continue providing excellent quality of care. Nicole can be found in office 103CC (previously Margie's office.) Please stop by and welcome her back. She is excited to be back "home."



Multiple Choice

Across

1. Get bent out of shape
5. Hop out of bed
10. Homer's boy
14. Apple product
15. Poker strategy
16. Consent and Reason, e.g.
17. Rickety old car
19. Tough journey
20. Music producer Brian
21. Cushiness
22. Wrecks completely
24. Trips the light fantastic
26. Some is junk
27. Geometry calculation
29. Listening
33. Privations
36. To-do list item
38. Kind of market
39. Scads
40. Leaves out
41. Bitsy opener
42. Start a hand
43. Statistical calculation
44. Conquers
45. Grand plans
47. Rock's companion
49. Nitwit
50. Salad bar bit
54. Like some competitors
57. Tournament draw
59. Alumna bio word
60. --- Spumante
61. Snitch
64. Czech or Serb
65. Skiers' transports
66. Scott Turow novel
67. Play opening?
68. Lauder of cosmetics
69. Unkempt state



Down

- | | | |
|--|----------------------------------|--------------------------|
| 1. More than uptight | 18. Suggestive looks | 44. Sword or swordsman |
| 2. Hotpoint competitor | 23. It may be struck | 46. Soft shoe, for short |
| 3. Betray | 25. Herd journey | 48. Threat-ending words |
| 4. Agt.'s take | 26. Overcome | 51. Senseless |
| 5. Travolta film | 28. Not more than | 52. Monica of sports |
| 6. Diner sign | 30. Utah ski resort | 53. Cobbler's stock |
| 7. It can wear down from too much travel | 31. Take ten | 54. Eschew edibles |
| 8. NAFTA signatory | 32. What Simon does | 55. Cruise stopover |
| 9. Locker room motivators | 33. Rolls of bills | 56. And others |
| 10. Conflict site | 34. Templeton or Baldwin | 57. Career HRs, e.g. |
| 11. Taj Mahal's city | 35. Early life preserver? | 58. Raison d--- |
| 12. Walk unsteadily | 37. Word with traveler's or band | 62. Washboard at the gym |
| 13. Exclamations of reproach | 40. Brunch fare | 63. Star Cruise |