

Programs with Chaplain Luke Bocher:

Tuesday: Chats w/ Chap
Olm Fellowship Hall - 10:00 a.m.

Wednesday: Worship with Chaplain Luke
11:00 am - Olm Fellowship Hall

Bank Services at Fairhaven.

First Citizens State Bank—Thursdays from 11:00-11:45 am in the Private Dining Room.

Premier Bank - 10:00-11:00am available by calling the Whitewater Branch Manager, Krystal Walsh for an appointment on the 2nd and 4th Fridays. Contact Krystal at 262-458-2933 or kw Walsh@bankwithpremier.com.

Happy September Birthday!!!

★ Charles Carter	01
★ Edith Gilbertson	02
★ Patricia Jacobson	02
★ Louise Carter	03
★ Carol Cobb	04
★ Nancy Rowley	04
★ Mark Schmuhl	04
★ Robert Cunningham	08
★ Nelda Bergsten	13
★ Frank Harenza	14
★ Elizabeth Asher	16
★ Gary Heaberlin	21
★ Bonita Schauder	24
★ Caroline Ursprung	24
★ Keran Olm-Stoelting	26
★ Michael Harenza	29
★ Beth McCulley	29



Catholic Mass

Wednesday, Sept. 3 at 10:00am in Olm Fellowship Hall with St. Patrick Catholic Church.

Catholic Communion

Tuesday, Sept. 16 at 10:00am in the B Lounge
with St. Patrick Catholic Church.

In Memory of ...

Mary Wickler



CURRENT EVENTS & IDEAS The purpose of our group is always to have meaningful conversation about significant issues of our times and to do so with kindness and respect for all. Our gatherings are uplifting and fun for all! Please join us each Tuesday afternoon at 2:00 pm in Olm Hall.

Vaccinations

Vaccines for flu and Covid will be offered at the following times:

Tuesday, October 7—9 am-12:30 pm at Fairhaven
2 pm-3:00 pm at Prairie Village

Thursday, October 23—2-3:45 pm at Fairhaven only.



If you miss the first date you can come to Fairhaven for the second one.

Your Regularly Scheduled Programs

Chair Exercise w/ Janet and Lisa—every Thursday
at 10:45 in Olm Fellowship Hall

Bean Bag Baseball—every Monday at 10:00 am in
Olm Fellowship Hall (except the third Monday)

Bingo:	Tuesdays at 6:00 pm Fridays at 1:15 pm Saturdays at 1:15 pm
--------	---



Because of the world that we now live in, we here at Fairhaven strive to keep our facility safe. This is why all outside doors except for the main entrance are locked 24/7, and that door is on the schedule of when it is open. The front door is unlocked from 7:45 am – 7:30 pm.

To help keep our facility safe, the policy is to have all staff and visitors enter through the front door. Please do not use a stone, or any other item to hold open an exterior door.

Fairhaven Lecture Series—Fall 2025: Mondays at 3:00 p.m. in Olm Fellowship Hall
Standing the Test of Time

We live in a time of constant change. Our world is full of new technologies, innovations, and fads that impact the way we communicate, engage in entertainment, appreciate art and care for ourselves and others. But what in our world resists change? Why have these things endured while others pass by? Join us this fall as we talk about the traditions, institutions, and artifacts that have stood the test of time.

September 15	Rooted in Tradition: UW-W's Journey in Teacher Education—Lana Collet-Klingenberg, Dean, College of Education and Professional Studies
September 22	Learning Leadership from Dogs—Aditya Simha, Professor, Management
September 29	How arer They Holding Up?: The Status of Great Books in a Western World—Mark Zunac, Associate Professor, Literature, Writing, and Film

Please be respectful and considerate of lecturers and other residents. Turn off cell phones, and refrain from conversations with your neighbors during the lecture.



We want to remind all that the Fairhaven Bus will be running like normal with a pickup at 829 Burr Oak Trail at 2:35 and 875 Acorn Ridge right after. You do not need to sign up for these rides and return ride will happen immediately following the lecture.

All lectures are free and open to the public and are held on Mondays at 3 p.m. in the Olm Fellowship Hall of [Fairhaven Senior Services, 435 West Starin Road, Whitewater](#). Street parking is adjacent to the building. Masks may be required in common areas at Fairhaven Senior Services. Please be prepared on arrival. Unable to attend? Links to videos of lectures, can be found at <http://www.uww.edu/ce/fairhaven>.

National Emergency Preparedness Month, sponsored by the Federal Emergency Management Agency is held annually in September. The month is set aside to remind all citizens that natural and man-made disasters can strike at any time. It's important to have a planned response when you're at work, on vacation or on the road.

In 2023, 75,104 weather events resulted in 877 deaths and 3,857 injuries. Heat, wildfires, and tornadoes were responsible for the most deaths during 2023. The largest number of reported injuries resulted from heat, tornadoes, and winter weather.

When you face a natural or man-made emergency, try to stay informed through radio, TV or the Internet. In some cases, however, cable, electric and cell phone service will be disabled, making communication nearly impossible.

To keep yourself safe for common emergencies in our area please review what you are to do in case of Tornado, Fire, Electrical Outage(s) and Flash Floods. It is important to always have a flashlight or lantern on hand and in working order, and to make sure your cell phone is fully charged in inclement weather. It is also recommended that everyone has at least three days of food and water, a First Aid Kit in their home, and an emergency kit in their car.

On a final note: Please be sure to store all important documents – birth certificates, insurance policies, etc. – in a fire-proof safe or safety deposit box, and let either a family member, POA, or your emergency contact know where these items are located.

Happenings in September

Tuesday, September 2nd at 10:45 am in Olm Fellowship Hall—Seated Tai Chi

Wednesday, September 3rd at 10:00 am in the Piano Lounge—Pet therapy with Cheryl and Aoife

Thursday, September 4th at 1:15 pm in Olm Fellowship Hall—Christian History of Fairhaven presentation with Max Rigert. This year marks the 65th anniversary of the founding of Fairhaven. We will trace the historic and religious roots of the United Church of Christ, with which we are affiliated, and the story of how Fairhaven came into being. We'll also look at some of what has transpired here during the past 65 years of our existence.

Thursday, September 4th at 2:25 pm in Olm Fellowship Hall—Retirement Social for Betty Shelb

Friday, September 5th at 1:15 pm in Olm Fellowship Hall—Drum Circle with Christine Hayes

Monday, September 8th at 1:15 pm in Olm Fellowship Hall—The Starin Park Water Tower: Local Landmark at Risk presentation. Included in the presentation will be the history of the water tower, its current condition and possible solutions for its preservation.

Monday, September 8th at 6:00 pm in Olm Fellowship Hall—BBC Earth DVD: A Moment in the Sun-The Terrestrial Planets (1 hour) The first episode traces the development of the four rocky worlds closest to the Sun: Mercury, Venus, Earth and Mars. Born together, they battled the unbelievable violence of the early solar system to become stable planets.

Tuesday, September 9th at 10:45 am in Olm Fellowship Hall—Chair exercise with Janet

Wednesday, September 10th at 10:00 am in the Piano Lounge—Pet therapy with Cheryl and Aoife

Wednesday, September 10th at 1:15 pm in Olm Fellowship Hall—Life and Photographs of HH Bennett presentation with Bob Block. HH Bennett is the world renowned landscape photographer of Kilbourn City, which is known today as Wisconsin Dells. HH Bennett was more than a photographer, as he was also a carpenter, builder, inventor, businessman and tourism promoter. Learn how Bennett invented and built his “Snapper” camera, capturing the first ever recorded stop action photograph known as the “Leap of the Chasm.” This presentation will follow the life of HH Bennett from his birth in Canada in 1843 through his life and death in 1908 in Kilbourn. The presentation will feature a collection of HH Bennett’s unique, artistic and amazing landscape photographs of the Dells. This presentation is informative, educational, and entertaining.

Wednesday, September 10th at 3:45 pm in the Front Lobby—UW-W Drawing Class project (description in the newsletter)

Thursday, September 11th from 11:15-12:30—Apartment and Prairie Village outdoor picnic day

Thursday, September 11th at 1:15 pm in Olm Fellowship Hall—BBC Earth The Planet DVD: The Two Sisters-Earth and Mars (1 hour) For millions of years, Mars enjoyed oceans blanketed by a thick atmosphere and a temperature climate. Whilst at the same moment Earth was a far less favorable habitat. Our planet was toxic to life, her atmosphere choked with carbon dioxide and her oceans acidic.

More Happenings in September...

Thursday, September 11th at 5:30 pm in the Piano Lounge—Pet therapy with Janesville-Beloit Kennel Club

Friday, September 12th at 2:00 pm in Olm Fellowship Hall—Bingo with UW-W Women's Soccer Team

Monday, September 15th at 10:30 am in Olm Fellowship Hall—Listen In with Paul Kuenning

Monday, September 15th at 3:00 pm in Olm Fellowship Hall—Fairhaven Lecture Series is back! Rooted in Tradition: UW-W's Journey in Teacher Education

Monday, September 15th at 6:00 pm in Olm Fellowship Hall—BBC Earth The Planet DVD: The Godfather-Jupiter (1 hour) Jupiter is not only the biggest but also the oldest planet in the solar system. It alone witnessed the birth of the Sun and ever since its immense gravity has shaped the destiny of the other worlds.

Tuesday, September 16th at 10:00 am in the B Lounge—Catholic Communion

Tuesday, September 16th at 10:45 am in Olm Fellowship Hall—Seated Tai Chi

Tuesday, September 16th at 1:00 pm in the D Lounge—UMC Communion

Wednesday, September 17th at 10:00 am in the Piano Lounge—Pet therapy with Sheri and Suzi

Wednesday, September 17th at 1:00 pm in Olm Fellowship Hall—Matinee Movie

Wednesday, September 17th at 3:45 pm in the Front Lobby—UW-W Drawing Class Project visit #2

Wednesday, September 17th at 6:30 pm in the Skylight Dining Room—Ice Cream Social

Thursday, September 18th at 9:30 am in Olm Fellowship Hall—Resident Council Meeting

Thursday, September 18th from 10:00-11:00 am in the Whitewater Conference Room—Free Blood Pressure Screenings w/ Fort Wellness Staff.

Thursday, September 18th at 1:15 pm in Olm Fellowship Hall—Community Drum Circle with Christine Hayes and guest staff members from Rainbow Hospice

Thursday, September 18th at 2:30 pm in Skylight Dining Room—Apple peanut butter cake and ice cream social

Thursday, September 18th at 6:00 pm in Olm Fellowship Hall—BBC Earth The Planet DVD: Life Beyond the Sun-Saturn (1 hour) Raised in the freezing outer reaches of the solar system, Saturn began life as a strange planet of rock and ice

Friday, September 19th at 1:15 pm in Olm Fellowship Hall—Dog treat making w/ UW-W students

More Happenings in September...

Saturday, September 20th from 10:00-12:00 in the Front Lobby—Whitewater Fiber Arts Group

Saturday, September 20th at 4:00 pm in the Piano Lounge—Saturday Social

Monday, September 22nd at 3:00 pm in Olm Fellowship Hall—Fairhaven Lecture Series: Learning Leadership from Dogs

Monday, September 22nd—UW-W Women's Soccer Outing. We will leave the front lobby at 4:30 for the 5:00 pm game. Please sign up at the front desk if you would like to go and support the women's soccer team.

Tuesday, September 23rd at 10:45 am in Olm Fellowship Hall—Chair exercise with Janet

Tuesday, September 23rd from 1:00-1:40 pm in Olm Fellowship Hall—Studio 84 (in Whitewater) Dance performance. We are a group of dancers with different life experiences, dance experiences, and of different ages. We honor our different "disabilities" such as autism, down syndrome, neurodiversity, and physical differences. We use the word "disabilities" but view them as making us strong and creative. Currently our dance company has four active members: Mila, Stuart, Steven, and Karen. But we have guest dancers who return to dance with us at special events. You may have seen Nate and Faith in our prior performances. Margaret Wheeler is our Director, choreographer, and teacher, and we have a special addition to our group, Katherine M. Sainsbury, a Choreographer, substitute teacher and talented and experienced dancer. There will also be items for sale outside of Olm Hall that members of Studio 84 have made. (This program will be done in plenty of time to have Current Events start on time at 2:00)

Wednesday, September 24th at 10:00 am in the Piano Lounge—Pet therapy w/ Karen and Ezzy

Thursday, September 25th—Hearthstone and Assisted Living Picnic Day (2nd, 3rd, and 4th floors)

Thursday, September 25th at 1:15 pm in Olm Fellowship Hall—Bingo w/ staff from Rainbow Hospice

Thursday, September 25th at 5:30 pm in the Piano Lounge—Pet therapy with Janesville-Beloit Kennel Club

Friday, September 26th—Ice cream social outing to the Alpha Sigma sorority house. Transportation will leave the front lobby by 1:10 pm and it is asked that you sign up for this event at the front desk. Due to this outing, we will not have bingo.

Monday, September 29th at 3:00 pm in Olm Fellowship Hall—Fairhaven Lecture Series: How are They Holding Up?: The Status of Great Books in a Western World

Monday, September 29th at 6:00 pm in Olm Fellowship Hall—BBC Earth the Planet DVD: Into the Darkness-Ice Worlds (1 hour) Uranus, barely visible to the naked eye, was once thought to be the furthest planet from the Sun. But with the telescope and some careful viewing we discovered it had a companion: Neptune.



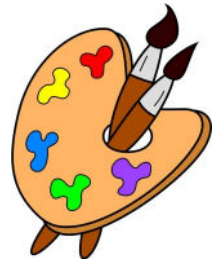
Drawing III Class Project

This Fall, the class is looking for 7 residents to participate in this interactive class project where they will do a drawing of you. This will take place from 3:45-4:30 pm on the following dates, and you need to be able to participate in all 3 dates:

Wednesday, September 10th

Wednesday, September 17th

Wednesday, October 1st



Please sign up with the front desk if you would like to participate in this class project.

From the Chaplain

“For everything there is a season and a time for every purpose under heaven” (Ecclesiastes 3:1).

Very shortly, we will transition from the season of Summer to the season of Fall. It's a new time with the air cooling, young people going back to school, the leaves turning colors and (my favorite) football games on the weekend! Life too has its seasons: childhood, adulthood, old age and many in between. And with each season comes both blessings and challenges. And as you know from your experience, as we age, those challenges often increase!

But the good news is that God walks with us in each season, helping us with those challenges and all the loss, the pain that often comes with them. And God gives us the strength and hope we need.

And God also gives us blessings to cheer us along the way. It may come in the form of family members or supportive friends. Sometimes, it's easy to miss these blessings. For instance, God gives us a beautiful sunny day, flowers along the path we're walking, a delicious meal to eat, the sight of a monarch butterfly, a smile and a good word from someone as we pass them. All these gifts are from God and help to sustain us and lift us in whatever season we are experiencing.

May we hold to the assurance of God's presence during the season we are experiencing. And, may we open our eyes to the everyday blessings that God gives along the way. As the familiar hymn goes, “He walks with me and he talks with me and he tells me I am his own.”
Autumn blessing to you each and every day.

Chaplain Luke

Notes from the Chaplain

I will be attending a United Church of Christ Church Camp during the week of September 15. My wife and I will be at Moon Beach Camp which is near St. Germain. It's a camp focused on the wonder of God's creation all around us.

As a result there will be no gathering on Tuesday (16th) or worship on Wednesday (17th). Also, on Wednesday, September 24 we will offer the sacrament of Holy Communion at our 11:00 a.m. worship service. If you are unable to attend and would like to receive the sacrament, please contact me beforehand.

Thanks for the Memories:

Dear Residents: As I retire, I want to let you all know that being a part of your lives and being able to serve you has been a privilege and an honor. You are much more than residents to me; you have become part of my family.

I am leaving with mixed emotions as I will dearly miss my daily interactions with you all; but mostly I am leaving here with a heart full of gratitude for the sharing of your life stories, and for the caring and kindness you have shown me. You have enriched my life in countless ways, and I will carry those memories with me forever.

I can only describe the past 46 years as incredible, fulfilling and heartwarming, thanks to all the residents, family members and staff both past and present that I have had the privilege to work with and for. I am very blessed that in the journey of life my path led me to Fairhaven.

I am not going to be saying goodbye to everyone as I retire on September 5, but instead “see you later” as I plan on returning as either a visitor, volunteer or to help out in other areas if needed after I take a little time to figure out what retirement looks like for me.

The Fairhaven community that we have all built together is a source of pride to me, and the years I have spent here have been invaluable. I wish you all continued good health and happiness in the future.

In Friendship with Love, Betty Schelb- EVS Director



Mary Loomis began orientating to the position of EVS Director as of May 5, 2025, and will be taking over Betty's position as she retires

Mary has previous experience as a supervisor, customer service skills, and degrees in healthcare and gerontology. Mary was also an RA at both Hearthstone and Fairhaven prior to transitioning into her new position. Mary and the entire housekeeping and laundry services teams under her supervision will continue with the commitment of providing quality service(s) to our residents and Fairhaven in the future.

Friends of Fairhaven/Mini Mart Update, September 2025

The next few months are some of the busiest all year at the Mini Mart. Seasonal (think fall, Halloween, Thanksgiving, and Christmas) greeting cards and gift items will be available. Thanks to Val Cole, who manages our card inventory year-round, and Janet Morrow, who is always on the lookout for seasonal items. Please shop with us!

The Mini Mart, located on Fairhaven's Lower Level, is open Monday and Wednesday afternoons 12:30-3:00. It is open to all residents, employees, and guests. A long-time project of the Friends of Fairhaven, it is an all-volunteer effort. We appreciate your support since your purchases fund our donations that benefit all residents. **The Mini Mart will be closed on Monday, Sept. 1 in observance of Labor Day.**

Shining Stars



Shelly Kavanaugh—Housekeeping

- Shelly notice flooding in the housekeeping room and took immediate action to limit damage/loss.
Signed– Mary Loomis and Betty Schelb

Christina Aranda—CAN

- Last time mom had to be transported to Rainbow Hospice unit Christina was amazing. She took mom to the bathroom before the ambulance arrived and also assisted them in getting mom settled for the trip there. Christina was so helpful and made sure mom was a priority! Mom speaks so highly of her all the time. Thank you Christina for supporting me that night during a stressful time.
Signed– Barb Gawlik (daughter of Agnes Hommer)

Raul Castro—Transportation

- Raul goes above and beyond by being courteous, flexible, and helpful to residents. He is a ray of sunshine at Fairhaven.
Signed– Mary Jo Geraghty

Tena Engels—Front Desk

- Tena is always friendly and willing to help residents schedule appointments as well as keeping the reception area beautiful.
Signed– Mary Jo Geraghty



DESSERTS

H	F	N	P	A	R	F	A	I	T	H	I	B	S	Q
V	R	I	M	Z	D	L	U	M	O	U	S	S	E	N
M	Z	T	C	H	E	E	S	E	C	A	K	E	I	C
J	T	A	O	T	P	I	E	Q	B	S	L	Y	W	U
L	B	L	O	A	P	C	H	O	C	O	L	A	T	E
I	C	E	C	R	E	A	M	R	E	P	T	U	E	T
C	V	G	C	T	P	Y	S	K	C	E	Y	K	R	G
O	O	D	U	S	I	U	A	T	B	W	A	S	E	Z
O	C	O	P	B	M	C	D	R	R	H	Y	U	L	F
K	U	U	C	R	W	O	O	D	S	Y	Q	N	B	U
I	S	G	A	O	I	S	R	K	I	Z	F	D	B	D
E	T	H	K	W	P	U	L	E	N	N	D	A	O	G
K	A	N	E	N	X	I	V	O	S	U	G	E	C	E
S	R	U	O	I	M	F	H	T	R	U	F	F	L	E
I	D	T	S	E	F	R	U	I	T	U	Q	D	T	D

Word List:

Brownie
Cake
Cheesecake
Chocolate
Cobbler
Cookie
Cupcake
Custard
Doughnut
Fruit
Fudge
Gelatin
Ice Cream
Milkshake
Mousse
Parfait
Pastry
Pie
Pudding
Smores
Sorbet
Sundae
Tart
Truffle